

# Renovation Phase Plan

Note: It is recommended to complete at least one phase every fiscal year.

## Phase One:

- #1: Existing Spaces: Study Areas  
*Create more areas for multiple types of study*
- #7: Rejuvenate Spaces: Update Building Interior  
*Perform cosmetic changes to the inside of the location to reflect current interior design trends*
- #9: Rejuvenate Spaces: Signage  
*Create signage designating different services and learning spaces within the library*

## Phase Two:

- #2: Existing Spaces: Library Staff/Departments  
*Remove the reference/information desk, redesign the circulation area, and bring library staff to the forefront of the library with new office locations and spaces*
- #3: Existing Spaces: Print Collections  
*Evaluate and reduce the size of the print collection to create a space for computer lab and learning commons*
- #6: New Spaces: Learning Commons  
*Bring multiple campus services together into one space to foster learning, creation, and innovation*

## Phase Three:

- #5: New Spaces: Library Café  
*Bring casual learning into the library by creating a café*

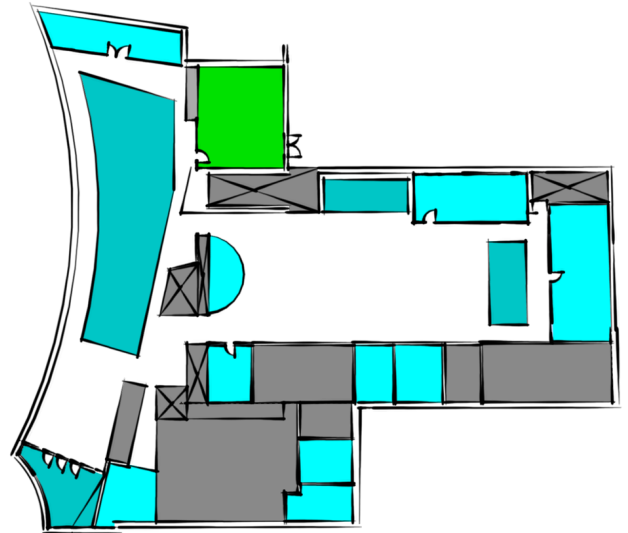
## Phase Four:

- #4: Existing Spaces: Special Collections  
*Move all special collections materials to compact shelving and create a reading room with office in the current writing center*
- #8: Rejuvenate Spaces: Technology & Study Tools  
*Supply more outlets in public areas and incorporate technological tools to aide study*

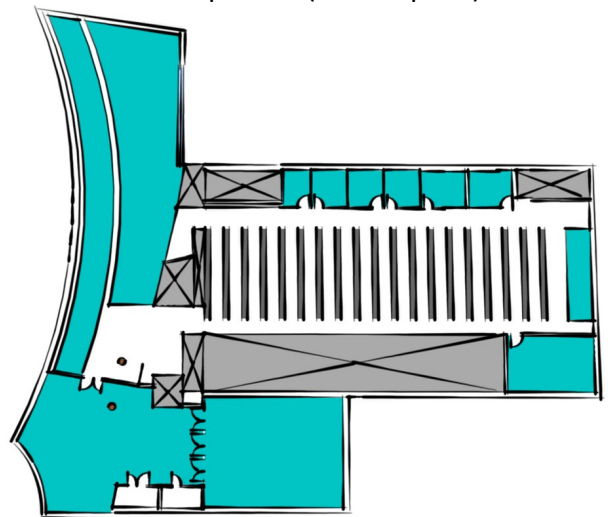
### Key

- : Phase One
- : Phase Two
- : Phase Three
- : Phase Four

Main Floor (Loud Space)



Top Floor (Quiet Space)



Basement Floor (Quiet Space)

